

GALLERY SYSTEM ART DISPLAYS

Gallery System Lighting Installation Instructions

For use with Power Pack power supply kits



Troubleshooting Tips

- **If some light wands illuminate but others do not**, check to be sure the bulbs are seated firmly in their sockets. If they are, try removing and re-seating the non-functioning light wands per figures 11 and 12 in Step 4. If problems persist, try swapping bulbs between functioning and non-functioning wands to determine which component is faulty, and contact us for assistance.
- **If none of the lights will illuminate**, check all power connections, and make sure your wall outlet is providing AC power. The indicator light on the power supply should be illuminated when properly connected to a wall outlet.
- **If the indicator light on the power supply is flashing rapidly**, it indicates an overload in the system. Unplug the cable from the junction box, and check the number of light wands and bulb wattages to ensure they are compatible with your power supply (see "Important Safety Notes" in the Getting Started Section of these instructions). Contact us if the situation persists.
- **If the power supply is plugged in to a known-good AC outlet but its indicator light is NOT illuminated**, leave the power supply connected to the AC outlet, and unplug the 12-volt connector from the Junction Box. If the power supply indicator lights up when disconnected from the lighting system, there may be a problem with the blue cable – please contact us for assistance.

Our Service Commitment, Return Policy, and Warranty

We are committed to offering personal service and assistance to all customers, before and after the sale. Please contact us with any questions about installing or using your Gallery System lighting equipment. We provide a 60-day return policy; lighting components are covered by a 5-year limited warranty, except for Power Pack transformers and LED light bulbs, which are covered by a 2-year limited warranty. For details please contact us, or visit www.GallerySystem.com.

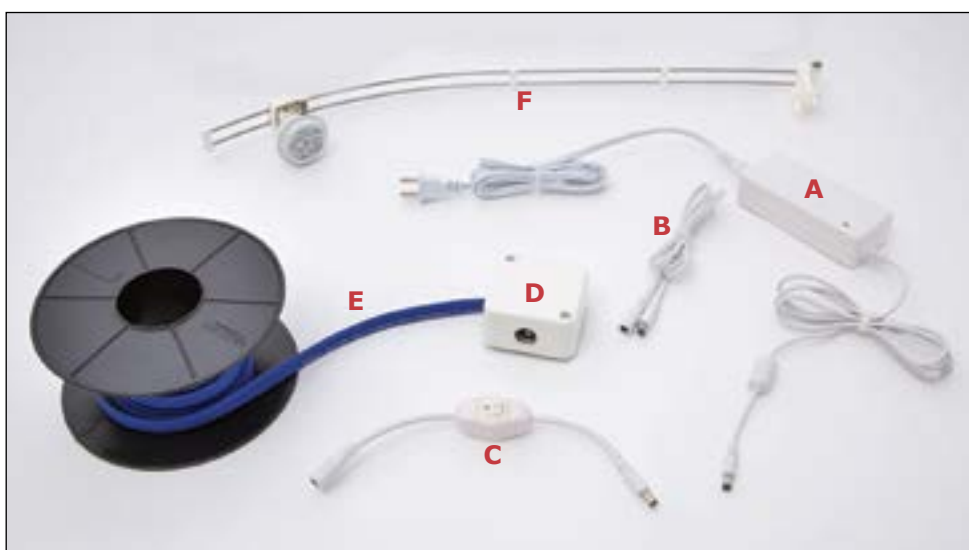
Need help? We're here for you!

Phone: **800-460-8703** • Outside the U.S.: **+1 781-237-8856**
www.gallerysystem.com • **info@gallerysystem.com**

Follow us on social media:



GS GALLERY SYSTEM LIGHTING POWER PACK AND LIGHT WANDS



- A. Power Supply** – Provides safe low voltage DC power to the lighting system
- B. DC extension Cable** – One or two can be used for greater flexibility in power supply location
- C. On/off switch** – Allows for easy control of lights
- D. Junction Box** – Provides simple, no-tools connection between power supply and track cable
- E. Blue Track Cable** – Carries the 12-volt current along the wall-mounted Original Gallery System tracks to the light wands
- F. Light Wands with LED Bulbs** – Attach at any point along the wall-mounted track; adjustable to direct light onto your art works

Double-Sided Adhesive Tape (*not shown*) – Secures the Blue Track Cable in the wall-mounted tracks

These components are for use only with the Original Gallery System. They are not compatible with the GalleryOne™ hanging system, or with any products not made by Gallery System Art Displays.

You will need the following on hand for installation:

Tape Measure/Ruler
Scissors
Wire-Cutting Pliers
Phillips Screwdriver
Rubbing Alcohol

Need more of anything? Contact us!

GS GALLERY SYSTEM LIGHTING OVERVIEW & GETTING STARTED

We've designed your Original Gallery Lighting System to provide gallery-quality lighting of your artworks for many years. Installation is a handyperson-type job that many people will feel comfortable doing themselves; you may also choose to hire an electrician. If you need assistance, please contact us – we're here to help.

It's generally best to start by installing your Original Gallery System wall tracks in your display space before proceeding with the lighting installation, but please observe the following important points:

- To ensure proper lighting coverage, we recommend a maximum wall track installation height of about 9 feet (2.75 meters) above the floor. Placing the track too high can result in less light reaching the art, and an oblique angle that reduces effectiveness. For best results, works to be illuminated should have their centerlines 20 to 40 inches (50 to 100 cm) below the wall-mounted track.
- Leave at least one inch (2.5 cm) of clearance between the ceiling and the top of the track to allow for light wand installation.
- When mounting the wall tracks, leave 2.75 inches (7 cm) of clear wall space for the Junction Box. Refer to Step 1 on the opposite side of this sheet; depending on your installation the Junction Box may be placed in an open space at one end of the track, or in a central position in a gap between two sections of track.
- When sections of track meet at a corner, cut them at a 45-degree angle to ensure a clear path for the Blue Track Cable.

IMPORTANT SAFETY NOTES:

- **To ensure safe operation**, use only LED bulbs (7-watt maximum) and do not exceed the specified number of light wands for your power supply:

Power Supply	Maximum Number of Light Wands
Power Pack (60-watt)	5

- **Do not plug your Power Supply into a wall outlet before completing Step 3 of the instructions.**
- **For installations requiring a large number of wands**, please contact us for assistance. We can design an economical custom lighting set for your needs. You may also use additional Power Packs, as long as they are installed independently - do not connect multiple Power Packs to the same cabling.
- **WHEN REPLACING BULBS USE ONLY LEDs OF EQUIVALENT WATTAGE – DO NOT USE HALOGEN BULBS**

GS STEP 1 PLANNING YOUR INSTALLATION

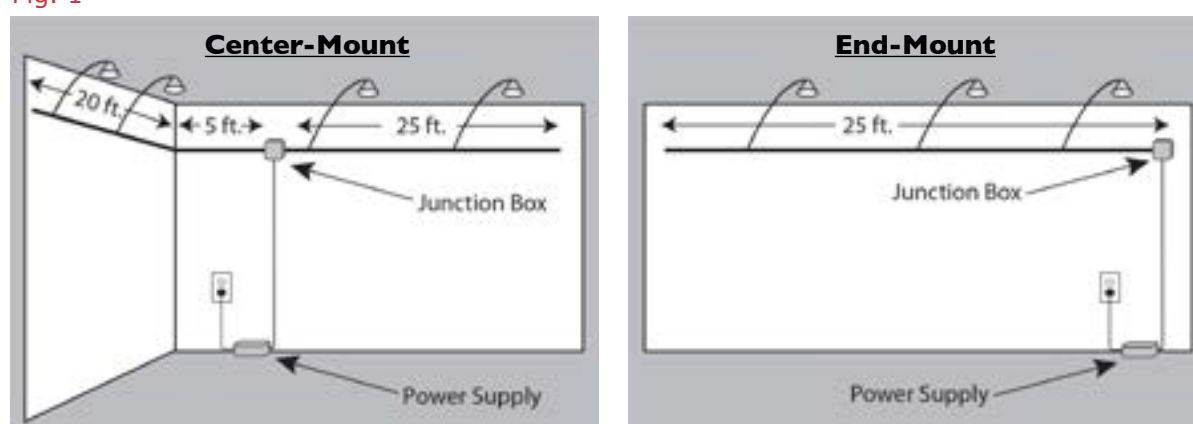
The 12-volt power used by your new lighting system is very safe, but cannot travel long distances, so thoughtful positioning of the power supply and junction box is necessary.

The Power Supply needs access to an AC outlet and ample airflow to prevent overheating. It can rest on the floor, but must be located no farther than 11.5 feet (3.5 meters) from the Junction Box. The connecting cables may be run inside a wall-mounted conduit cover (not included).

Power can travel up to 25 feet (7.6 meters) in either direction from the Junction Box. The Junction Box can be located at one end of the wall-mounted track, or, for maximum installation length of up to 50 feet (15.2 meters) be placed in the middle of the track (see Fig.1).

Be sure to leave clear wall space of 2.75 inches (7 cm) for the Junction Box when mounting tracks on wall. Do not exceed specified number of light wands for your Power Pack, listed in the chart under **IMPORTANT SAFETY NOTES**.

Fig. 1



Need help with your installation? Contact us!

GS STEP 2 FOR END-MOUNT INSTALLATIONS ONLY, PREPARE THE JUNCTION BOX

Follow Step 2 instructions if you're installing the Junction Box at one end of your track.
If the Junction Box will be placed in the center of your track, proceed to Step 3.

Fig. 2



The Lighting Kit arrives to you with the Blue Track Cable spooled and both ends pre-connected to the Junction Box. One end must be disconnected for end-mount installations.

Fig. 3



Begin by removing the Junction Box cover with a screwdriver.

Fig. 4



Using thumb or screwdriver, depress the white levers to release the cable on the side appropriate for your setup.

When placing the Junction Box at the right-hand end of your installation, disconnect the cable on the **right** side of the junction box, leaving it connected to the **left** side.

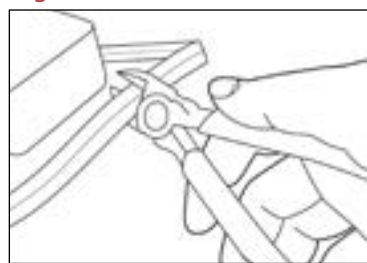
When placing the Junction Box at the left-hand end of your installation, disconnect the cable on the **left** side of the junction box, leaving it connected to the **right** side.

When finished, replace the Junction Box Cover.

GS STEP 3 PREPARE CABLES, MOUNT JUNCTION BOX, PREPARE TRACKS

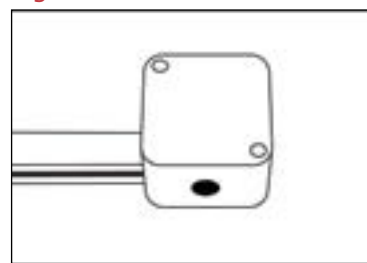
Before proceeding, make sure you have chosen a suitable well-ventilated location for the power supply, near an AC outlet, with a clear path of 11.5 feet (3.5 meters) or less for running the connecting cable to the Junction Box location. **DO NOT PLUG IN THE POWER SUPPLY UNTIL STEP 3 IS COMPLETED.**

Fig. 5



Measure distance(s) from the Junction Box location to the end(s) of wall tracks. Unspool corresponding length(s) of cable, and cut as appropriate. For center-mount installations, be sure to allow adequate length on both sides of Junction Box. **DO NOT PLUG IN POWER SUPPLY UNTIL CABLE HAS BEEN CUT.**

Fig. 6



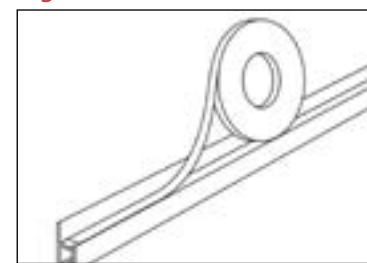
Mount the Junction Box with the power input jack on the bottom, aligning the cable(s) with the recessed horizontal surface inside the wall-mounted track. The included adhesive mounting pad can be used on most wall surfaces; for other types of surfaces, use screws in the mounting holes provided inside the Junction Box.

Fig. 7



Using a rag or paper towel, wipe the inner horizontal surface of the wall-mounted track with rubbing (isopropyl) alcohol to ensure a clean surface, and allow to dry. If the Blue Track Cable has attracted dust or grease, wipe it as well, and let dry.

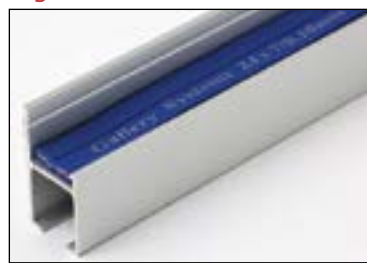
Fig. 8



Affix the double-sided adhesive tape to the track as shown. Do not remove the strip covering the top-side adhesive until you are ready to put the blue cable in place. Leave the blue cable connected to the Junction Box.

GS STEP 4 PLACE BLUE CABLE IN WALL TRACKS, CONNECT POWER, AFFIX LIGHT WANDS

Fig. 9



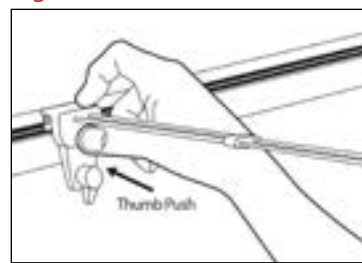
Working outward from the Junction Box, remove the protective strip from the adhesive tape, and lay the blue cable in position atop the adhesive tape. Press the cable to make sure it sits securely in the track, and trim any excess at the end(s).

Fig. 10



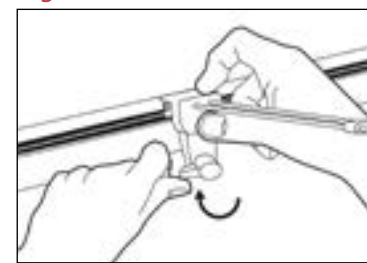
Connect the Power Supply to the Junction Box. Use one or two of the provided DC extension cables if necessary; the On/Off switch can be placed at any convenient point in the chain. Make sure all connectors are securely plugged in. Plug the Power Supply into a wall outlet, and turn on the power.

Fig. 11



Fit an LED bulb into the socket of a light wand. Make sure the lever at the base of the wand is in the Open (lever down) position, and position the wand on the track. Press horizontally with thumb so that fitting is flat against front of track – do not press down.

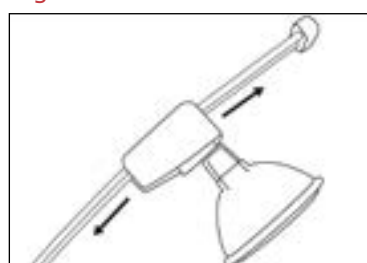
Fig. 12



Continue holding wand base firmly against front of track, and turn the wand lever clockwise to the horizontal position. Do not press the wand base down – let the lever do the work, drawing the wand's contact probes into the Blue Track Cable. The lamp should then turn on. Repeat process for all wands.

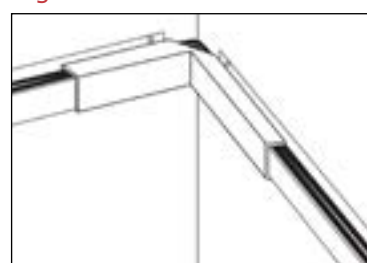
GS STEP 5 ADJUSTMENT AND FINISHING TOUCHES

Fig. 13



You can adjust the lighting angle by sliding the socket and bulb up or down along the wand.

Fig. 14



Optional covers conceal the blue cable when it goes around a corner. Use two-sided adhesive tape at both ends to affix the cover to the wall tracks.

Fig. 15

